



## Pinnacle Series

The Leading Learning Management System for AEC Organizations.

Eagle Point Software has been a trusted leader in learning for almost four decades. With our Pinnacle Series learning management system, we provide your team with the resources they need to stay ahead of the competition, along with exceptional support and customer service.

But we're more than just another architecture, engineering, and construction training resource - we're your trusted partner in improving learning, knowledge sharing, collaboration, efficiency, and productivity throughout your organization.



### HERE'S A PREVIEW OF THE BENEFITS YOU CAN ENJOY WITH PINNACLE SERIES

#### ★ Expert-Created Content

Our expert content team, equipped with real-world industry experience, provides the most comprehensive resources on the must-know software, including AutoCAD, Revit, Civil 3D, and more.

#### 🔄 Continuous Learning

Our on-demand learning resources, integrated learning plugin for Autodesk products, and powerful search function provide your team with instant solutions, issue resolutions, and upskilling opportunities.

#### 📊 Increased Efficiency

Save time by eliminating the need for employees to search for answers or attend time-consuming training sessions. Pinnacle Series promotes efficiency, resulting in error-free work and increased billable time.

#### + Improved Client Satisfaction

Get more done - and get it done correctly the first time - with the learning and skill-building tools in Pinnacle Series. Our resources help design professionals work more productively while reducing project work efforts, which translates into happier clients.

#### 👤 Personalized Learning

Pinnacle Series' integration with KnowledgeSmart gives your team custom learning programs that are tailored to what they need to learn, saving time by bypassing the topics they've already mastered.

#### 👥 Live Events

Connect with your team no matter where they are and provide them with guidance from your subject matter experts with live event scheduling and RSVP capabilities right into Pinnacle Series.

### Support that makes a difference

- ✓ According to a recent software usage report, businesses waste an average of \$224 per computer on unused programs.
- ✓ When you choose Pinnacle Series, you won't become another statistic.
- ✓ You'll have a dedicated Customer Success Manager (CSM) who will guide you every step of the way to ensure your organization not only implements Pinnacle Series, but that your employees actually use it.

Reach out to your local representative for more information.  
**Together we will find the solution that fits your needs.**

CONTACT SALES

LEARN MORE AT  
**ARKANCE.US**



Let's **advance** the way we work together, to **build a better world.**



## Boost productivity and your bottom line

It's estimated that employees spend 1.8 hours each day searching for information they need to do their jobs effectively. That's equivalent to a full workday each week! Pinnacle Series can help you save that valuable time and put it towards productive project work. With our powerful search, on-demand architecture, engineering,

and construction content, and Related Learning plugin for Autodesk products, your employees can quickly find the answers they need and get back to the work that matters. They'll feel empowered, and you'll see improved productivity, efficiency, and client satisfaction at your firm by choosing Pinnacle Series.

### GIVE YOUR FIRM A COMPETITIVE EDGE AND RETAIN YOUR TOP TALENT

With Pinnacle Series' continuous learning resources, your employees receive

Personalized learning tailored to their specific skill gaps

Tools to support their project work and professional growth

They won't waste time training on what they already know

Improve employee retention and talent acquisition rates

Drive Meaningful company growth

### Take learning to the next level

Our AEC content libraries are always growing, thanks to our **team of content creators with real-world industry experience**. You won't find any content written by inexperienced authors here – our team understands the challenges you're facing because they've been there before, and can create the resources you need to overcome them.

Pinnacle Series also allows you to **create custom content** covering your organization's standards, best practices, and internal workflows. No matter what your team needs to do their best work, they'll find it in Pinnacle Series.

Ready to **experience the difference Pinnacle Series can make** for your design teams? Visit our website today to request a demo, a free pilot program, or a meeting with our team to discuss your organization's learning needs!

### Expansive learning libraries for the software your team uses every day.

Our comprehensive content library includes thousands of workflows, videos, curated learning paths, and documents on the top programs and topics your team uses every day.

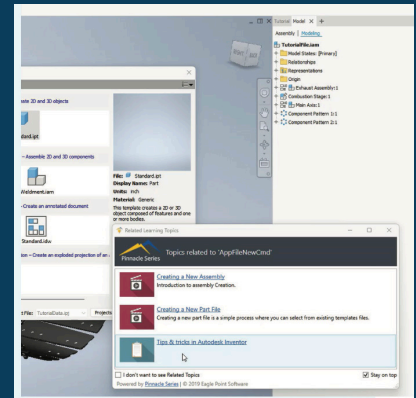
[ INCLUDING ]

BIM 360

AUTOCAD

REVIT

CIVIL 3D



*"You don't feel like in six months you've reached the full potential of what you can do on the platform – there's still so much more for us to tap into. [Pinnacle Series is] just stunning in terms of the support and the work that we can do to collaborate to really push and drive engagement."*

**KEVIN HAGEN**

Business Performance Manager / SUMMERSET

Reach out to your local representative for more information.  
**Together we will find the solution that fits your needs.**

CONTACT SALES

LEARN MORE AT  
**ARKANCE.US**



Let's **advance** the way we work together, to **build a better world.**